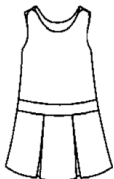


## Girls Uniform



### Bib-Top Jumper

Grades: Kdgn - 4th  
 Plaid: # 530-1  
 Sizes: Price:  
 4 - 12 ..... \$34.00  
 14 - 18 ..... \$36.00



### Drop Waist Jumper

Grades: Kdgn - 4th  
 Plaid: # 985  
 Sizes: Price:  
 4 - 12 ..... \$34.00  
 14 - 18 ..... \$36.00



### 4 - Pleat Skirt

Grades: 5th - 8th  
 Plaid: # 530-1  
 Sizes: Price:  
 4 - 12 ..... \$31.00  
 14 - 18 ..... \$32.00  
 20 - 24 ..... \$34.00



### Skort (Elastic Back)

Grades: Kdgn - 8th  
 Plaid: # 530-1  
 Sizes: Price:  
 4 - 12 ..... \$29.00  
 14 - 18 ..... \$30.00  
 20 - 24 ..... \$32.00



### Knit Shirt w/Logo

Grades: Kdgn - 8th  
 Colors: Grey, Navy or White  
 Sizes: Price:  
 Youth XS - M ..... \$17.00  
 Youth L - XL ..... \$18.00  
 Adult S - XL ..... \$20.00  
 Adult 2XL ..... \$22.00



### Peter Pan and Sport Collar

Grades: Kdgn - 8th  
 Color: White  
 Sizes: Price:  
 4 - 12 ..... \$13.00  
 14 - 16/AXS - AM ..... \$14.00  
 Adult L - XL ..... \$16.00

\*5th - 8th Over Blouse add \$ 5.00



### Walking Shorts/ Twill Pants

Grades: Kdgn - 8th  
 Color: Navy  
 Sizes: 

	Shorts	Pants
4 - 6x.....	\$18.00	\$19.00
Reg & Slim	\$20.00	\$21.00
Jrs. & Halfs	\$25.00	\$26.00

# ST. PAUL OF THE CROSS SCHOOL

Student Requirement List 2011 - 2012



www.schooluniformity.com • (323) 726 - 0882

2109 W. Whittier Blvd. Montebello, CA 90640

## Outerwear



### Cardigan

Grades: Kdgn - 8th  
 Color: Navy  
 Sizes: Price:  
 Youth XS - M ..... \$25.00  
 Youth L - XL ..... \$26.00  
 Adult S - XL ..... \$28.00  
 Adult 2XL ..... \$32.00



### Pullover

Grades: Kdgn - 8th  
 Color: Navy  
 Sizes: Price:  
 Youth XS - M ..... \$24.00  
 Youth L - XL ..... \$25.00  
 Adult S - XL ..... \$27.00  
 Adult 2XL ..... \$30.00



### Vest

Grades: Kdgn - 8th  
 Color: Navy  
 Sizes: Price:  
 Youth XS - M ..... \$21.00  
 Youth L - XL ..... \$22.00  
 Adult S - XL ..... \$24.00  
 Adult 2XL ..... \$26.00



### Hooded Jacket

Grades: Kdgn - 8th  
 Color: Navy  
 Sizes: Price:  
 Youth XS - XL ..... \$36.00  
 Adult S - XL ..... \$41.00

## P.E. Uniform



### T-shirt w/ logo

Grades: Kdgn - 8th  
 Color: Grey  
 Size: Price:  
 Youth XS - XL ..... \$ 8.00  
 Adult S - XL ..... \$ 9.00



### Sweat Short

Grades: Kdgn - 8th  
 Color: Navy  
 Size: Price:  
 Youth XS - XL ..... \$ 9.00  
 Adult S - XL ..... \$12.00  
 Adult 2XL ..... \$14.00



### Jersey Short

Grades: Kdgn - 8th  
 Color: Navy  
 Size: Price:  
 Youth XS - L ..... \$ 8.00  
 Adult S - XL ..... \$10.00



### Sweat Top w/ logo

Grades: Kdgn - 8th  
 Color: Navy  
 Size: Price:  
 Youth XS - XL ..... \$18.00  
 Adult S - XL ..... \$20.00  
 Adult 2XL ..... \$22.00



### Sweat Pant

Grades: Kdgn - 8th  
 Color: Navy  
 Size: Price:  
 Youth XS - XL ..... \$16.00  
 Adult S - XL ..... \$18.00  
 Adult 2XL ..... \$20.00

## Boys Uniform



### Knit Shirt w/Logo

Grades: Kdgn - 8th  
 Colors: Grey, Navy or White  
 Sizes: Price:  
 Youth XS - M ..... \$17.00  
 Youth L - XL ..... \$18.00  
 Adult S - XL ..... \$20.00  
 Adult 2XL ..... \$22.00



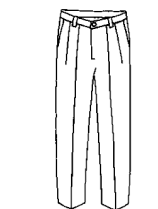
### Pinfeather Overshirt

Grades: 1st - 6th  
 Color: Blue  
 Sizes: Price:  
 4 - 12 ..... \$17.00  
 14 - 20 ..... \$18.00  
 22 - 26 ..... \$21.00



### Walking Shorts

Grades: Kdgn - 8th  
 Color: Navy  
 Sizes: Price:  
 4 - 7 Reg. & Slim ..... \$18.00  
 8 - 16 Reg. & Slim\* ..... \$20.00  
 27 - 32 Prep\* ..... \$23.00  
 Mens / Husky\* ..... \$25.00  
 \*Longer Length add... \*\$2.00



### Twill Pants

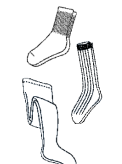
Grades: Kdgn - 8th  
 Color: Navy  
 Sizes: Price:  
 4 - 7 Reg. & Slim ..... \$19.00  
 8 - 16 Reg. & Slim ..... \$21.00  
 27 - 32 Prep ..... \$24.00  
 26 - 38 Husky ..... \$26.00  
 33 - 46 Mens ..... \$27.00

## Accessories



### Hair Accessories

Plaid: # 530-1  
 Assorted Styles ..... \$ 3.00 - \$ 6.00



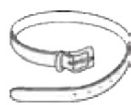
### Socks/Tights

Color: White  
 Style: Price:  
 Crew ..... \$4.50ea..or..3pr/12.00  
 Knee-Hi \$4.50ea..or..3pr/12.00  
 Tights (White) ..... \$ 8.00



### Emblem

Small ..... \$ 2.50



### Belts

Colors: Black and Navy  
 Style: Price:  
 Leather Belt ..... \$ 9.00  
 Stretch Belt ..... \$ 6.00



**NOTES:**

**SWEATSHIRTS:**

Navy Sweatshirts Must Have Imprinted Logo.  
You may not purchase a plain sweatshirt and  
apply the school emblem.

**WALKING SHORTS:**

May be worn year round.

**BOYS & GIRLS SHOES:**

SOLID Black Tennis Shoes.  
Soles must be Black.  
No High Tops.

**\*\*WE ALSO SELL ST. PAUL  
HIGH SCHOOL UNIFORMS\*\***



**www.schooluniformity.com**

**Store (323) 726 - 0882**

**Fax (323) 726 - 0933**

We honor Visa, Discover, Mastercard,  
American Express and ATM. Personal checks are  
accepted. Phone, mail and fax orders are wel-  
come: NO C.O.D'S. **PLEASE ALLOW FOUR TO  
SIX WEEKS FOR ALL OUT OF STOCK ITEM  
ORDERS PLACED AFTER JULY 1ST.**

Add 9.75% sales tax and  
a \$10.00 UPS delivery charge.

**(UPS CHARGES FOR LARGER  
ORDERS MAY VARY)**

**LAYAWAYS MAY BE PLACED BEGINNING  
MAY 1ST WITH A 20% DEPOSIT OR  
A MINIMUM DEPOSIT OF \$20.00  
ALL LAYAWAYS MUST BE PICKED UP BY  
OCTOBER 1ST.**

**DEPOSITS ARE NON REFUNDABLE!!!**

**ALL RETURNS/EXCHANGES MUST BE MADE  
WITHIN NINETY (90 DAYS).  
ALL RETURNED ITEMS MUST BE  
IN ORIGINAL CONDITION  
AND MUST BE ACCOMPANIED BY RECEIPT.  
NO REFUNDS WILL BE GIVEN  
WITHOUT RECEIPT.**

Prices subject to change without notice.  
If you have any questions concerning your  
uniform, please call our Company instead of  
the school.

**ST. PAUL OF THE  
CROSS SCHOOL**

14030 FOSTER ROAD  
LA MIRADA, CA 90638 (562) 921-2118

Your school uniforms may be purchased at  
our store throughout the year.

Our regular store hours are:

**MONDAY thru FRIDAY  
10:00 a.m. to 5:00 p.m.**

**SATURDAY  
10:00 a.m. to 3:00 p.m.**

**SUMMER HOURS**

**August 1st thru August 31st**

**MONDAY thru THURSDAY  
10:00 a.m. to 6:00 p.m.**

**FRIDAY  
10:00 a.m. to 7:00 p.m.**

**SATURDAY  
10:00 a.m. to 4:00 p.m.**

**SUNDAY  
11:00 a.m. to 2:00 p.m.**

**ANNUAL 20% SALES IN  
APRIL, JUNE AND DECEMBER**

For your convenience we will be selling  
uniforms at your school on:

**THURSDAY AUGUST 11TH 5:00-6:30**

**WEDNESDAY SEPTEMBER 28TH 3:00-4:00**

**WEDNESDAY NOVEMBER 9TH 3:00-4:00**