

## Girls Uniform



### Bib Top Jumper

Grades: 1st - 4th  
 Plaid: # 120 - 1  
 Sizes: Price:  
 4 - 12 ..... \$34.00  
 14 - 18 ..... \$36.00



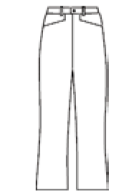
### Skort (Elastic Back)

Grades: 1st - 5th  
 Plaid: # 120- 1  
 Sizes: Price:  
 4 - 12 ..... \$29.00  
 14 - 18 ..... \$30.00  
 20 - 24 ..... \$32.00



### 4 - Pleat Skirt

Grades: 5th - 8th  
 Plaid: # 120- 1  
 Sizes: Price:  
 4 - 12 ..... \$31.00  
 14 - 18 ..... \$32.00  
 20 - 24 ..... \$34.00



### Twill Pants

Grades: 1st - 8th  
 Color: Navy  
 Sizes: Price:  
 4 - 6x ..... \$19.00  
 7 - 16 Reg & Slim ..... \$21.00  
 Jrs. & Halfs ..... \$26.00



### Walking Shorts

Grades: 1st - 8th  
 Color: Navy  
 Sizes: Price:  
 4 - 6x ..... \$18.00  
 7 - 16 Reg & Slim ..... \$20.00  
 Jrs. & Halfs ..... \$25.00



### Knit Shirt

Purchased at School



### Oxford

Grades: 6th - 8th  
 Color: White  
 Sizes: Price:  
 6 - 12 ..... \$18.00  
 14/16 - S - M ..... \$19.00  
 L-XL ..... \$21.00

# ST. ELIZABETH PARISH SCHOOL

## Student Requirement List 2011 - 2012



## Outerwear



### Cardigan

Grades: 1st - 8th  
 Colors: Navy or Dark Green  
 Sizes: Price:  
 Youth XS - M ..... \$25.00  
 Youth L - XL ..... \$26.00  
 Adult S - XL ..... \$28.00  
 Adult 2XL ..... \$31.00



### Vest

Grades: 1st - 8th  
 Colors: Navy or Dark Green  
 Sizes: Price:  
 Youth XS - M ..... \$21.00  
 Youth L - XL ..... \$22.00  
 Adult S - XL ..... \$24.00  
 Adult 2XL ..... \$26.00

### Sweat Shirt & Jackets

Purchased at School

## P.E. Uniform



### T-shirt w/ logo

Grades: 1st - 8th  
 Color: Dark Green  
 Size: Price:  
 Youth XS - XL ..... \$ 8.00  
 Adult S - XL ..... \$ 9.00



### Mesh Short w/ logo\*

Grades: 1st - 8th  
 Color: Dark Green  
 Size: Price:  
 Youth S - XL ..... \$12.00  
 Adult S - XL ..... \$15.00  
 Adult 2XL ..... \$17.00  
 \*Longer Length add.... \*\$2.00



### Sweat Pant w/ logo

Grades: 1st - 8th  
 Color: Dark Green  
 Size: Price:  
 Youth XS - XL ..... \$18.00  
 Adult S - XL ..... \$20.00  
 Adult 2XL ..... \$22.00

## Boys Uniform



### Twill Pants

Grades: 1st - 8th  
 Color: Navy  
 Sizes: Price:  
 4 - 7 Reg. & Slim ..... \$19.00  
 8 -16 Reg. & Slim ..... \$21.00  
 27 - 32 Prep ..... \$24.00  
 26 - 38 Husky ..... \$26.00  
 33 - 46 Mens ..... \$27.00



### Walking Shorts

Grades: 1st - 8th  
 Color: Navy  
 Sizes: Price:  
 4 - 7 Reg. & Slim ..... \$18.00  
 8 -16 Reg. & Slim\* ..... \$20.00  
 27 - 32 Prep\* ..... \$23.00  
 Mens / Husky\* ..... \$25.00  
 \*Longer Length add... \*\$2.00



### Knit Shirt

Purchased at School



### Oxford

Grades: 6th - 8th  
 Color: White  
 Sizes: Price:  
 6 - 12 ..... \$18.00  
 14 - 20 ..... \$19.00  
 S-M-L-XL ..... \$21.00

## Accessories



### Belts

Colors: Black, Navy and Brown  
 Style: Price:  
 Leather Belt ..... \$ 9.00  
 Stretch Belt ..... \$ 6.00



### Socks/Tights

Colors: White and Navy  
 Style: Price:  
 Crew ..... \$4.50ea. or .3pr/12.00  
 Knee-Hi. \$4.50ea. or .3pr/12.00  
 Tights ..... \$ 8.00



### Hair Accessories

Grades: 1st - 8th  
 Plaid: # 120-1  
 Style: Price:  
 Assorted  
 Styles ..... \$ 3.00 - \$ 6.00



www.schooluniformity.com • (323) 726 - 0882  
 2109 W. Whittier Blvd. Montebello, CA 90640



**NOTES:**

**KNITS / JACKETS / SWEAT SHIRTS:**  
Purchased at school

**SWEATERS:**  
Must be purchased from School Uniformity.

**BELTS:**  
All students 4th - 8th grade must wear belts with their shorts and pants.



[www.schooluniformity.com](http://www.schooluniformity.com)

**Store (323) 726 - 0882**

**Fax (323) 726 - 0933**

We honor Visa, Discover, Mastercard, American Express and ATM. Personal checks are accepted. Phone, mail and fax orders are welcome: NO C.O.D'S. **PLEASE ALLOW FOUR TO SIX WEEKS FOR ALL OUT OF STOCK ITEM ORDERS PLACED AFTER JULY 1ST.**

Add 9.75% sales tax and a \$10.00 UPS delivery charge.

**(UPS CHARGES FOR LARGER ORDERS MAY VARY)**

**LAYAWAYS MAY BE PLACED BEGINNING MAY 1ST WITH A 20% DEPOSIT OR A MINIMUM DEPOSIT OF \$20.00 ALL LAYAWAYS MUST BE PICKED UP BY OCTOBER 1ST.**

**DEPOSITS ARE NON REFUNDABLE!!!**

**ALL RETURNS/EXCHANGES MUST BE MADE WITHIN NINETY (90 DAYS). ALL RETURNED ITEMS MUST BE IN ORIGINAL CONDITION AND MUST BE ACCOMPANIED BY RECEIPT. NO REFUNDS WILL BE GIVEN WITHOUT RECEIPT.**

Prices subject to change without notice. If you have any questions concerning your uniform, please call our Company instead of the school.

**ST. ELIZABETH PARISH SCHOOL**

1840 NORTH LAKE AVE.  
ALTADENA, CA 91001 (626) 797-7727

Your school uniforms may be purchased at our store throughout the year.

Our regular store hours are:

**MONDAY thru FRIDAY**  
10:00 a.m. to 5:00 p.m.

**SATURDAY**  
10:00 a.m. to 3:00 p.m.

**SUMMER HOURS**

**August 1st thru August 31st**

**MONDAY thru THURSDAY**  
10:00 a.m. to 6:00 p.m.

**FRIDAY**  
10:00 a.m. to 7:00 p.m.

**SATURDAY**  
10:00 a.m. to 4:00 p.m.

**SUNDAY**  
11:00 a.m. to 2:00 p.m.

**FOR YOUR CONVENIENCE WE WILL BE AT YOUR SCHOOL ON:**

Tuesday	August 2nd	5:00 - 6:30pm
Friday	October 21st	3:00 - 4:00pm

**ANNUAL 20% SALES IN  
APRIL, JUNE AND DECEMBER**